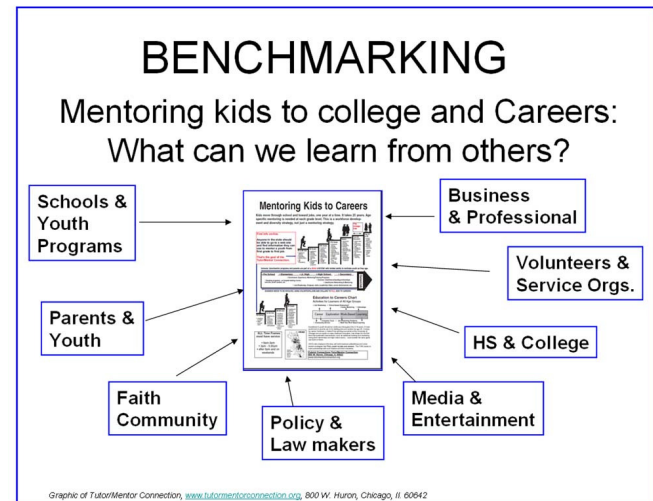
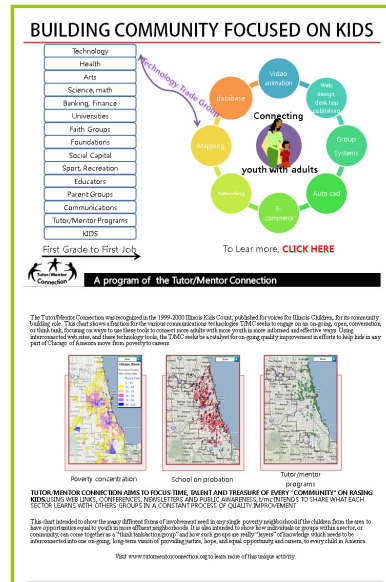


Involving high school and college students from many campuses in creating strategy visualizations and building community collaborations.

Kathy Engelken, Campus Compact w/D. Bassill



I created the Tutor/Mentor Connection in 1993 to help increase attention for volunteer-based tutor/mentor programs in every neighborhood, so volunteers and donors would seek out programs.

All programs have same needs:

Chicago area



We need these resources every day, in every neighborhood:

- * **volunteers**
- * **public visibility**
- * **operating dollars**
- * **technology**
- * **training/learning**
- * **leadership**

The shaded areas of this map of Chicago are the areas of most concentrated poverty.

Pg 4

Property of Tutor/Mentor Connection, 800 W. Huron, Chicago, IL 60642 Email for permission to use: tutormentor2@earthlink.net

I've used maps to show where programs are needed and where they are located.

<http://mappingforjustice.blogspot.com>

I've been able to generate numerous media stories as a result of events like the conferences. See samples at <http://www.tutormentorexchange.net/news-or>

However, this is not nearly enough. Thus, my goal is to help Tutor/Mentor Connection type leadership organizations form in high schools, colleges, faith groups and businesses.



Introduction of web quest
<http://michaelcnt.blogspot.com/2013/02/new-assignment-quest.html>

When someone goes on my web sites they are overwhelmed with information. If someone has not spent 10 to 20 years thinking of ways they could support the growth of tutor/mentor programs, or other needed social, health and environmental services in a geographic area, they don't immediately know what I'm talking about when I say "become a tutor/mentor connection".

Thus, my suggestion is to start a process of discovery.

Learn what the Tutor/Mentor Connection is, what the strategies are, and ways you might apply those strategies in a smaller region of the Chicago area, or in a different city than Chicago. This can take place in many locations.

Student visualizations can interpret this information to others.

Visualizations: <http://www.tutormentorexchange.net/definition-of-issues/ideasanimation>

Problem Solving Strategy

So, leaders can borrow ideas from many places, not just T/MC model.

I'll introduce the 8 steps to create this network. We called this a Tutor/Mentor Learning Network (TMLN).

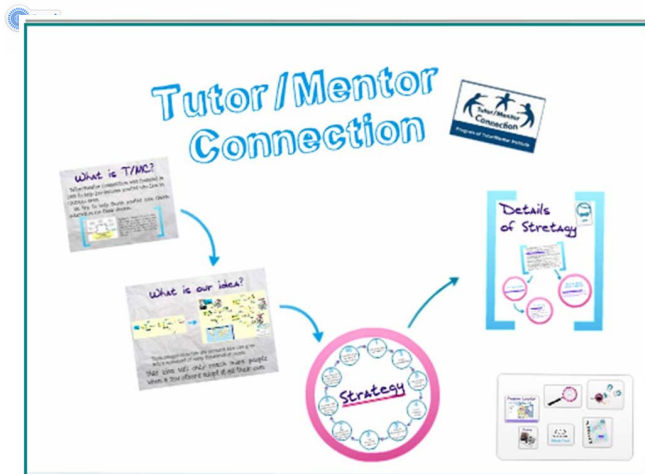


Students from various colleges have taken this role for the past 8 years.

Strategy Tree of Tutor/Mentor Connection



Do you want to help us?



Fortunately, you have some examples you might follow. Since 2006 interns and fellows from different colleges have spent time building their own understanding of the T/MC. As they have done this they have shared their understanding with others, via blog articles, power point presentations and videos.

Here are a few examples:

Chris Warren- NU Public Interest fellow:

“one year later, what have I learned”: <http://chrispip.blogspot.com/2009/07/one-year-later-what-have-i-learned.html>

“University partnerships” - http://chrispip.blogspot.com/2009/03/campuscatalyst-cabriniconnections_07.html

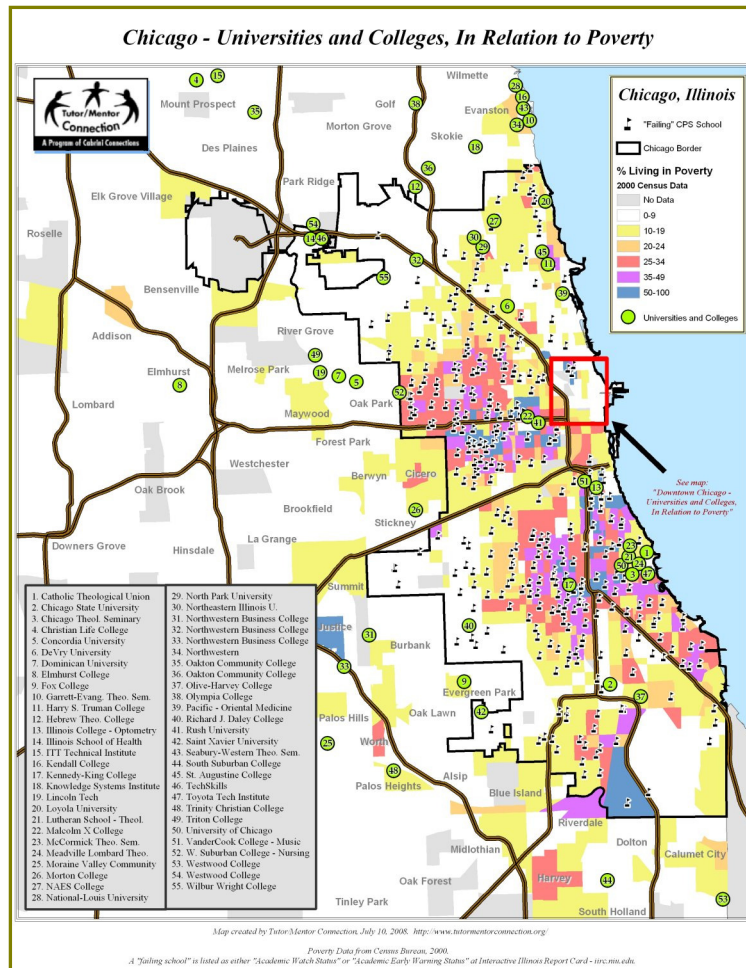
“Public Health issue” chrispip.blogspot.com/2008/12/tutoringmentoring-at-risk-youth-is.html

Interns from IIT and South Korea

Problem Solving Strategy – Pprezi <http://prezi.com/6l5imdjw1tyk/problem-solving-strategy/>

Problem Solving Strategy – Vdeo <http://www.youtube.com/watch?v=JLH87y1BPco#t=61>

More projects done by interns: <http://www.tutormentorexchange.net/definition-of-issues/ideasanimation>



Students from many high schools and colleges could work on the same projects, focusing on the area around their campus.

Once the presentations are posted on their own blogs or YouTube pages, an aggregation can point visitors to work done by many students, creating more interest, better understanding, and greater adoption of the ideas. Some of these presentations can be delivered at future conferences and other gatherings where people are getting together to innovate ways to reduce poverty, violence and improve education and pathways to jobs and careers.

DISCUSSION –
Kathy Engelken, Campus Compact – Dan Bassill, Tutor/Mentor Institute, LLC

- * Could students on different Campus Compact locations join this effort?
- * Could that lead to formal organization, with youth leaders, working to support growth of tutor/mentor programs in their college community

Visit the websites below and learn more:

Let's find ways to connect and talk about this.

At the following Tutor/Mentor Institute and Tutor/Mentor Connection web sites you can see how we put these ideas to practice every day in our effort to support our goals.

<http://www.tutormentorexchange.net>

<http://www.tutormentorconnection.org>

<http://www.tutormentorconference.org>

<http://tutormentor.blogspot.com>

<http://www.scribd.com/daniel-f-bassill-7291>

<http://www.pinterest.com/tutormentor/pins/>

<https://www.facebook.com/TutorMentorInstitute>

Email tutormentor2@earthlink.net to follow up and talk more about ways to build teams that take ownership of this strategy in different places.



**Tutor/Mentor Institute, LLC,
Tutor/Mentor Connection
Merchandise Mart PO Box 3303, Chicago, IL 60654**